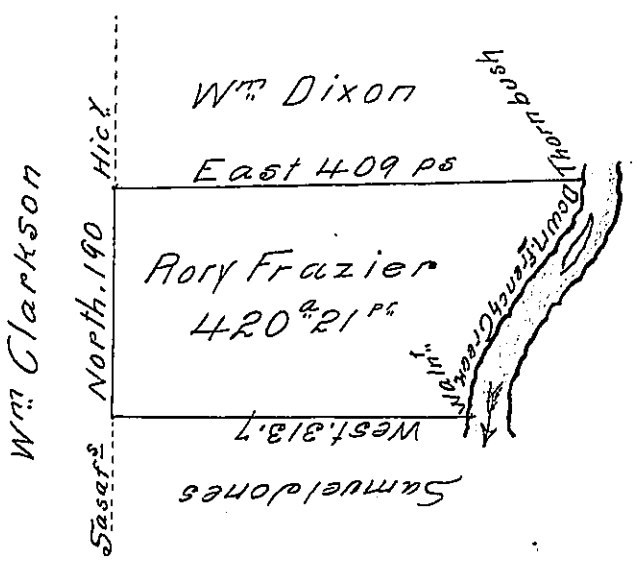


River Courses

S 6 W 35
 S 13 W 15
 S 62½ W 23
 S 29½ W 30
 S 16½ W 49
 S 32 W 36
 S 69 W 30
 218^{ps}

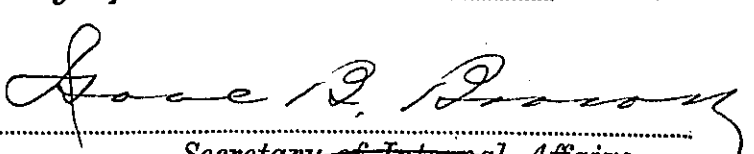


Situate on the West side and adjoining French Creek in Allegheny County
 Containing 420^a 21^{ps} and allowance of Six p Cent for Roads &c
 Surveyed the 6th day of October 1794 in pursuance of his imp
 rovement dated the 3^d Day of April 1792.

Wm Power Dy. Sr

To Danl Brodhead Esq.
 Surveyor General

IN TESTIMONY that the above is a copy of the original remaining on file in
 the Department of Internal Affairs of Pennsylvania, made
 conformably to an Act of Assembly approved the 16th day of
 February, 1833, I have hereunto set my Hand and caused
 the Seal of said Department to be affixed at Harrisburg,
 this twelfth day of October 1904


 Secretary of Internal Affairs.